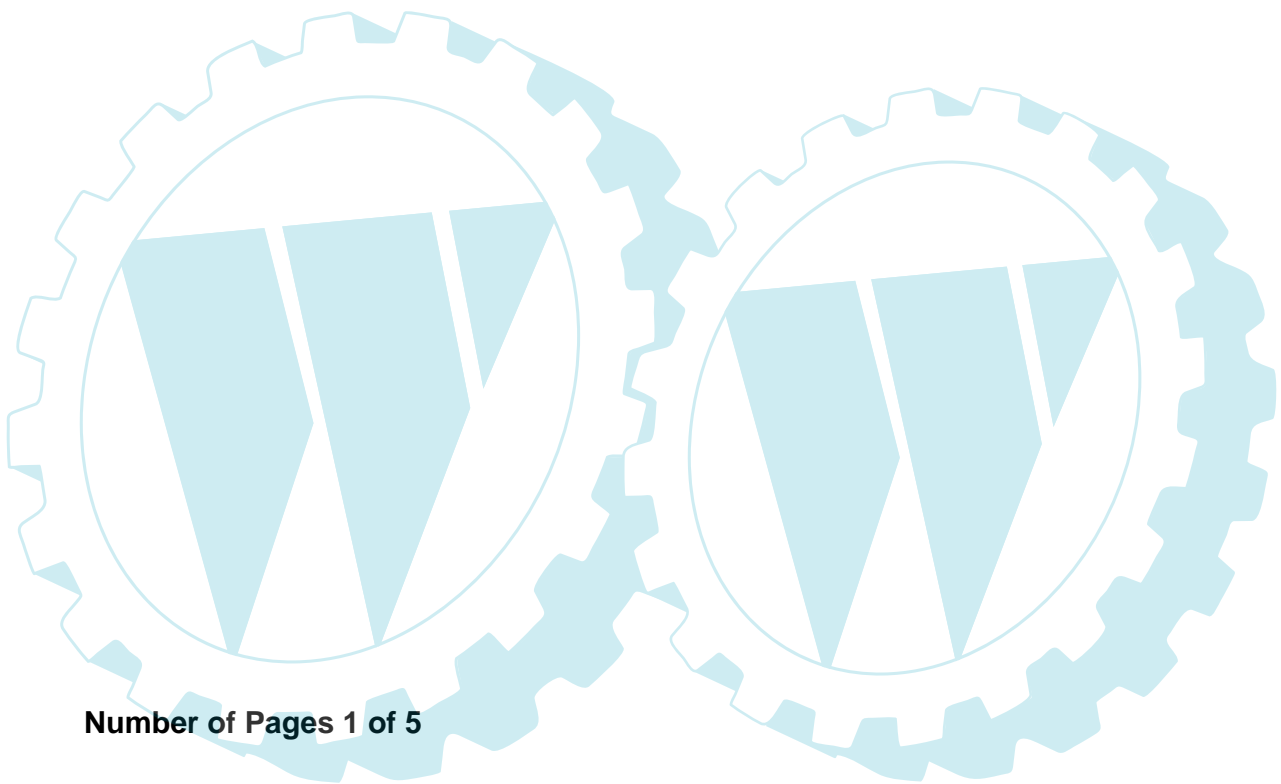


**ELECTROLUX OUTDOOR PRODUCTS**

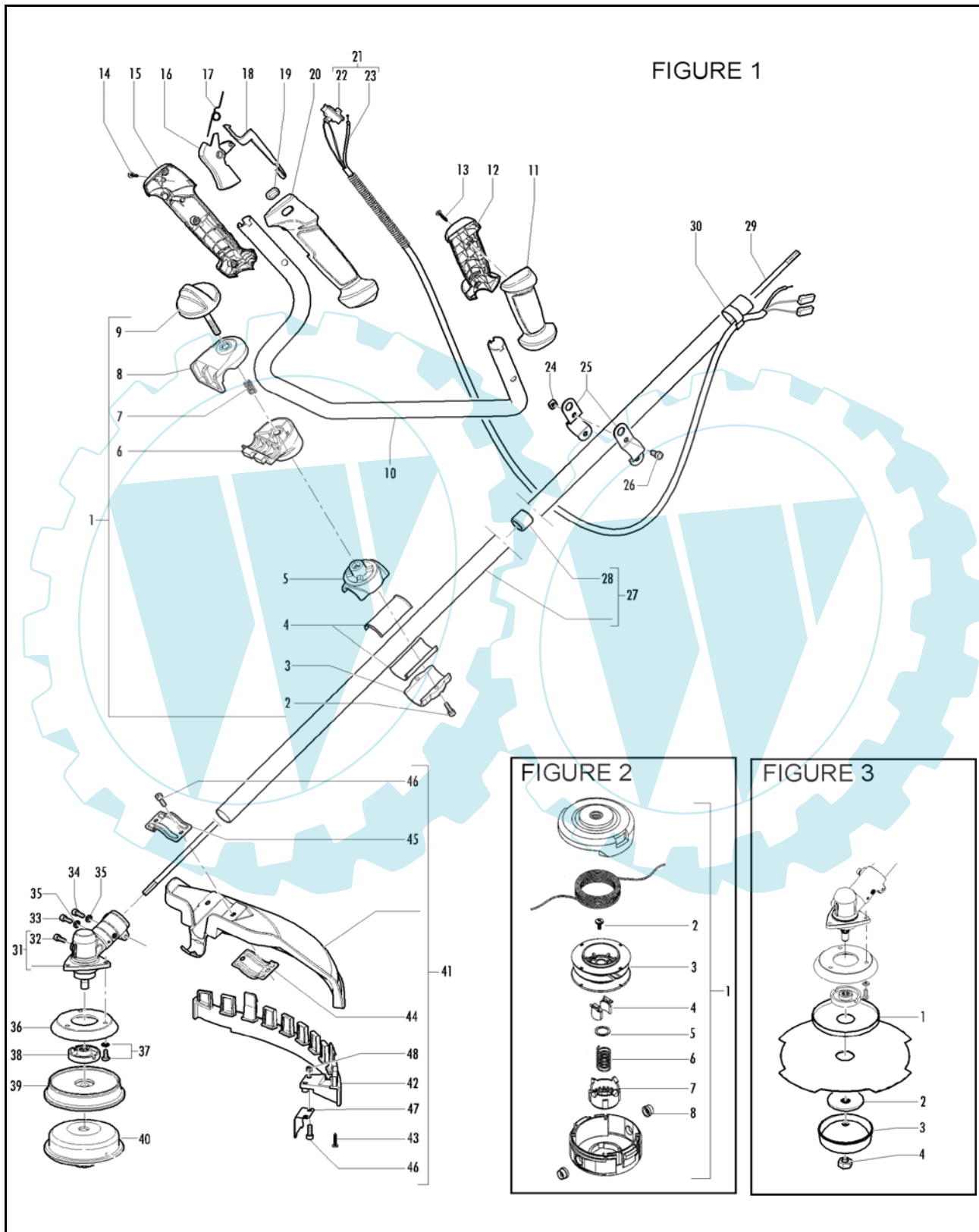
<b>PNC</b>	<b>Type/Prefix/nd</b>	<b>Model</b>	<b>Brand</b>
953900508	03	SUPREME 300B	McCULLOCH
953900512	03	B 300B	PARTNER



Number of Pages 1 of 5

<b>Factory:</b> IIQ - Valmadrera	<b>Product Group:</b> OP 93
<b>Publication Number:</b> EIPL2005_VP0504013	<b>Petrol Portable</b>
<b>Publication Date:</b> 20/04/05	<b>Sub Group</b> 9433

 **The Electrolux Group. The world's No.1 choice.**



 **The Electrolux Group. The world's No.1 choice.**

Item P/N McC P/N ELX Qty DESCRIPTION

Item P/N McC P/N ELX Qty DESCRIPTION

**FIGURE 1**

1	242902	538242902	1	clamp assy
2	• 235806	538235806	2	screw M5x20
3	• 242900	538242900	1	lower shaft clamp
4	• 241684	538241684	2	plastic clamp
5	• 243122	538243122	1	upper shaft clamp
6	• 242897	538242897	1	lower double handle clamp
7	• 242901	538242901	1	spring
8	• 242898	538242898	1	upper double handle clamp
9	• 242917	538242917	1	knob + screw M8x65
10	242249	538242249	1	handle bar
11	242536	538242536	1	left handle (1/2)
12	242535	538242535	1	right handle (1/2)
13	240862	538240862	1	screw 4x18
14	240862	538240862	3	screw 4x18
15	242533	538242533	1	right handle (1/2)
16	242537	538242537	1	throttle trigger
17	242540	538242540	1	trigger spring
18	242538	538242538	1	safety trigger
19	242648	538242648	1	cap
20	242534	538242534	1	left handle (1/2)
C 21	242930	538242930	1	wires assy
C 22	• 242439	538242439	1	switch
C 23	• 243061	538243061	1	throttle cable
24	236642	538236642	2	nut M6
25	228152	538228152	2	harness ring
26	235911	538235911	2	screw M6x12
C 27	242442	538242442	1	shaft ass'y
C 28	• 228192	538228192	5	bushing ass'y
C 29	240486	538240486	1	drive shaft
31	242728	538242728	1	gear box
32	• 240151	538240151	1	screw M8x10
33	235802	538235802	1	screw 5x14
34	235803	538235803	1	screw 5x25
35	236529	538236529	2	split washer
36	242729	538242729	1	flange adapter
37	240688	538240688	3	screw M5 and washer
A 38	242815	538242815	1	flange
B 39	242823	538242823	1	spacer
A 40		<b>FIGURE 2</b>	1	string head
B 41	249155	538249155	1	guard ass'y
B 42	• 242644	538242644	1	guard extension
43	• 240862	538240862	1	screw M5x14
44	• 242752	538242752	1	lower clamp
45	• 242629	538242629	1	upper clamp
46	• 227563	538227563	4	screw M5x16
47	• 241973	538241973	1	line cutter
48	• 229208	538229208	2	nut

**FIGURE 2**

A 1	538249346	538249346	1	string head
2	• 249374	538249374	1	set screw
C 3	• 249375	538249375	1	reel
C 4	• 249376	538249376	2	ratchet
C 5	• 249377	538249377	1	washer
C 6	• 249378	538249378	1	return spring
C 7	• 249379	538249379	1	button
C 8	• 249380	538249380	2	eyelet

**FIGURE 3**

B 1	241155	538241155	1	flange
A 2	241006	538241006	1	plate blade
A 3	236596	538236596	1	cup
A 4	240481	538240481	1	nut

A=ALTA ROTAZIONE  
B=MEDIA ROTAZIONE  
C=ALTA ROTAZIONE  
NUOVI CODICI

A=HIGH MOVING  
B=MEDIUM MOVING  
C=SLOW MOVING  
NEW P. NUMBERS

A=HAUTE DEMANDE  
B=MOYENNE DEMANDE  
C=BASSE DEMANDE  
NOUVELLES REFERENCES

A=GROBE NACHFRAGE  
B=MITTELMAESSIGE  
C=WENIGE NACHFRAGE  
NEU CODEX

FIGURE 4

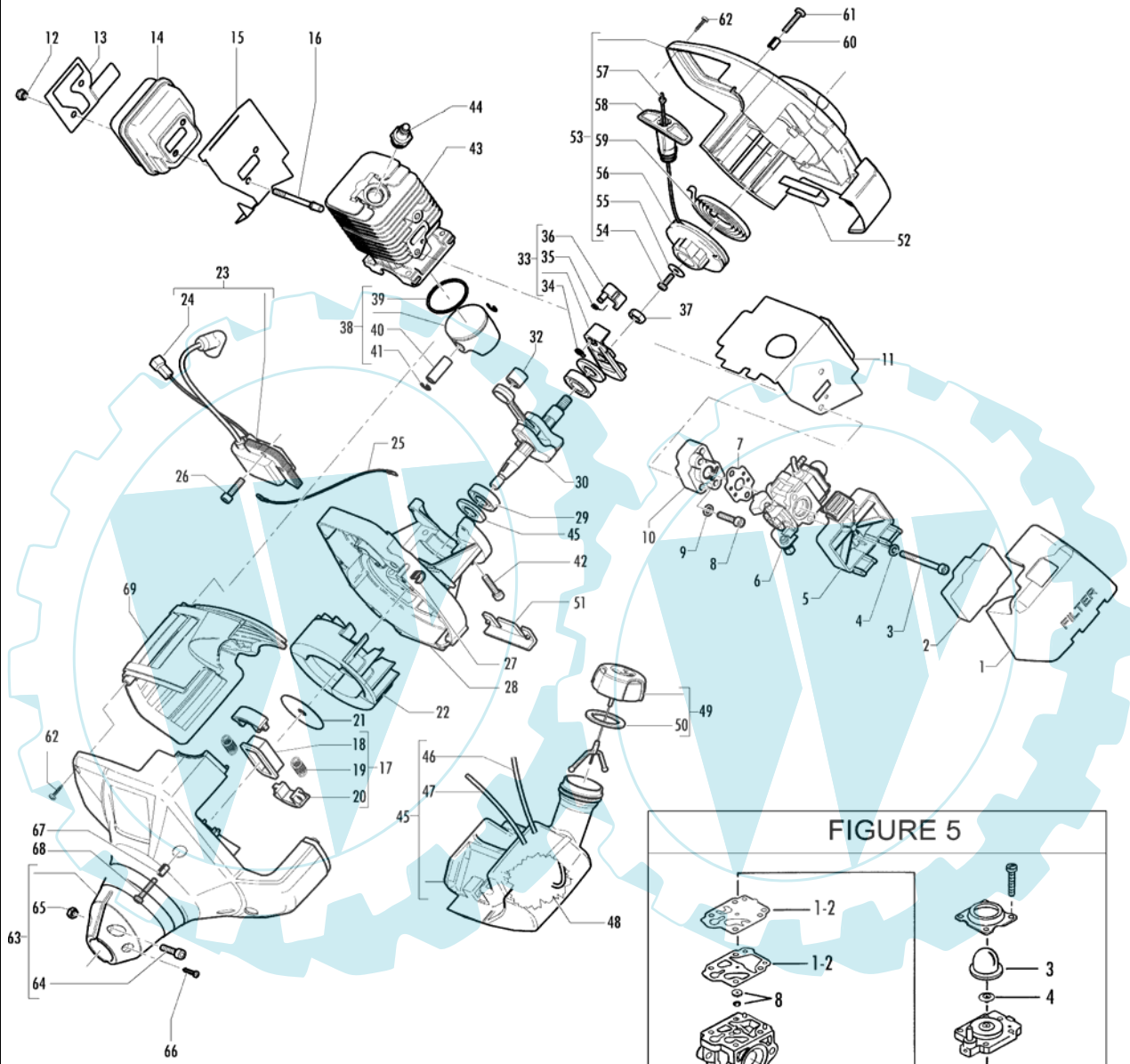
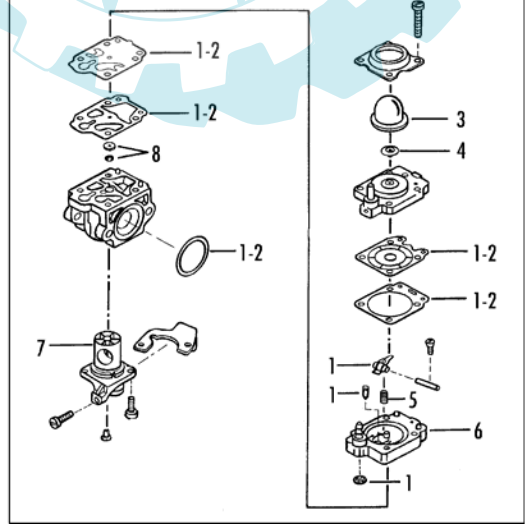


FIGURE 5



 **The Electrolux Group. The world's No.1 choice.**

Item	P/N McC	P/N ELX	Qty	DESCRIPTION	Item	P/N McC	P/N ELX	Qty	DESCRIPTION
<b>FIGURE 4</b>					<b>FIGURE 5</b>				
C 1	242848	538242848	1	filter cover	C 45	242889	538242889	1	fuel tank ass'y
A 2	242888	538242888	1	air filter	B 46	• 229789	538229789	1	hose
3	235808	538235808	2	screw M5x50	B 47	• 242527	538242527	1	primer bulb hose
4	235248	538235248	2	washer M5	A 48	93720	538093720	1	fuel pickup
C 5	242847	538242847	1	filter housing	B 49	242484	538242484	1	fuel cap ass'y
C 6			1	carburettor	B 50	• 236564	538236564	1	cap seal
A 7	242851	538242851	1	spacer gasket	51	242038	538242038	1	tank grommet
8	242173	538242173	2	screw M5x30	52	242039	538242039	1	tank grommet
9	235248	538235248	2	washer M5	C 53	242886	538242886	1	starter ass'y
C 10	242849	538242849	1	spacer	54	• 241077	538241077	1	screw 4x14
B 11	242860	538242860	1	cylinder gasket	55	• 241703	538241703	1	washer
12	235642	538235642	2	nut M5	B 56	• 241620	538241620	1	starter pulley
13	242962	538242962	1	muffler shield	A 57	• 241746	538241746	1	starter rope
C 14	242131	538242131	1	muffler	58	• 242852	538242852	1	starter handle
B 15	242859	538242859	1	muffler gasket	B 59	• 241619	538241619	1	starter spring
16	242037	538242037	2	muffler stud bolt	60	228260	538228260	3	bushing
B 17	241793	538241793	1	clutch ass'y	61	241963	538241963	3	screw M4x22
18	• 241789	538241789	1	clutch hub	62	240862	538240862	3	screw 4x18
A 19	• 241794	538241794	2	spring	C 63	242887	538242887	1	joint ass'y
20	• 241743	538241743	2	clutch shoe	64	• 235806	538235806	1	screw 5x20
21	241604	538241604	1	clutch dust shield	65	• 235216	538235216	1	nut
22	243311	538243311	1	flywheel	66	229632	538229632	1	screw 3.5x13
C 23	249727	538249727	1	ignition coil ass'y	67	241617	538241617	4	bushing
24	• 242959	538242959	1	switch wire	68	241963	538241963	4	screw 4x22
25	242891	538242891	1	ground wire	69	242845	538242845	1	engine cover
26	235806	538235806	2	screw M5x20	<b>FIGURE 5 WALBRO WYJ358</b>				
27	242895	538242895	1	wires protection	B	242885	538242885	1	carburetor WYJ538
28	242802	538242802	1	engine crankcase	A 1	• 247955	538247955	1	repair kit K20 WYJ
C 29	241594	538241594	2	bearing	C 2	• 247956	538247956	1	repair kit K10 WYJ
30	243486	538243486	1	crankshaft ass'y	C 3	• 225834	538225834	1	primer
C 32	235742	538235742	1	needle bearing	C 4	• 247957	538247957	1	valve
C 33	241784	538241784	1	starter pawl ass'y	C 5	• 247958	538247958	1	spring
34	• 111088	538111088	1	snap ring	C 6	• 249419	538249419	1	pumping body
35	• 241782	538241782	1	spring	C 7	• 249418	538249418	1	valve
36	• 241781	538241781	1	pawl	C 8	• 249417	538249417	1	jet
37	241624	538241624	1	nut M8					
C 38	249179	538249179	1	piston kit					
B 39	• 242602	538242602	1	piston ring					
40	• 241735	538241735	1	piston pin					
41	• 235008	538235008	2	snap ring					
42	235803	538235803	4	screw M5x25					
C 43	243076	538243076	1	cylinder					
A 44	322208	538322208	1	RDJ6J spark plug					
C 45	242994	538242994	2	seals					

A=ALTA ROTAZIONE  
B=MEDIA ROTAZIONE  
C=ALTA ROTAZIONE  
NUOVI CODICI

A=HIGH MOVING  
B=MEDIUM MOVING  
C=SLOW MOVING  
NEW P. NUMBERS

A=HAUTE DEMANDE  
B=MOYENNE DEMANDE  
C=BASSE DEMANDE  
NOUVELLES REFERENCES

A=GROBE NACHFRAGE  
B=MITTELMAESSIGE  
C=WENIGE NACHFRAGE  
NEU CODEX

 **The Electrolux Group. The world's No.1 choice.**